



OCCIDENTAL COLLEGE FACTBOOK

Academic Year 2009-10



Office of the President
Institutional Planning, Research, and Assessment

For internal use only – Do not circulate

OCCIDENTAL COLLEGE FACTBOOK

Academic Year 2009-10

TABLE OF CONTENTS

1	Headcount Enrollment
2	Chart: Enrollment 2004–2009
3	Enrollment by State and Country
4	Chart: Enrollment by State
5	Athletics and Student Clubs
6	Enrollment On- and Off-Campus
7	Chart: Students Living On- and Off-Campus
8	Number of Students in Each Major
10	Applicants
11	Admitted Students
12	Matriculants
13	Chart: Admit Rate and Yield Rate
14	Retention and Graduation Rates; Degrees Awarded
15	Financial Aid
16	Alumni Postgraduate Education
17	Faculty
18	Faculty Demographics
19	Chart: Ethnicity of Students and Faculty
20	Student-Faculty Ratio and Class Size
21	Staff
22	Tuition, Fees, and Room and Board
23	Endowment, Budget, Facilities, and Library
24	Trustees and Officers

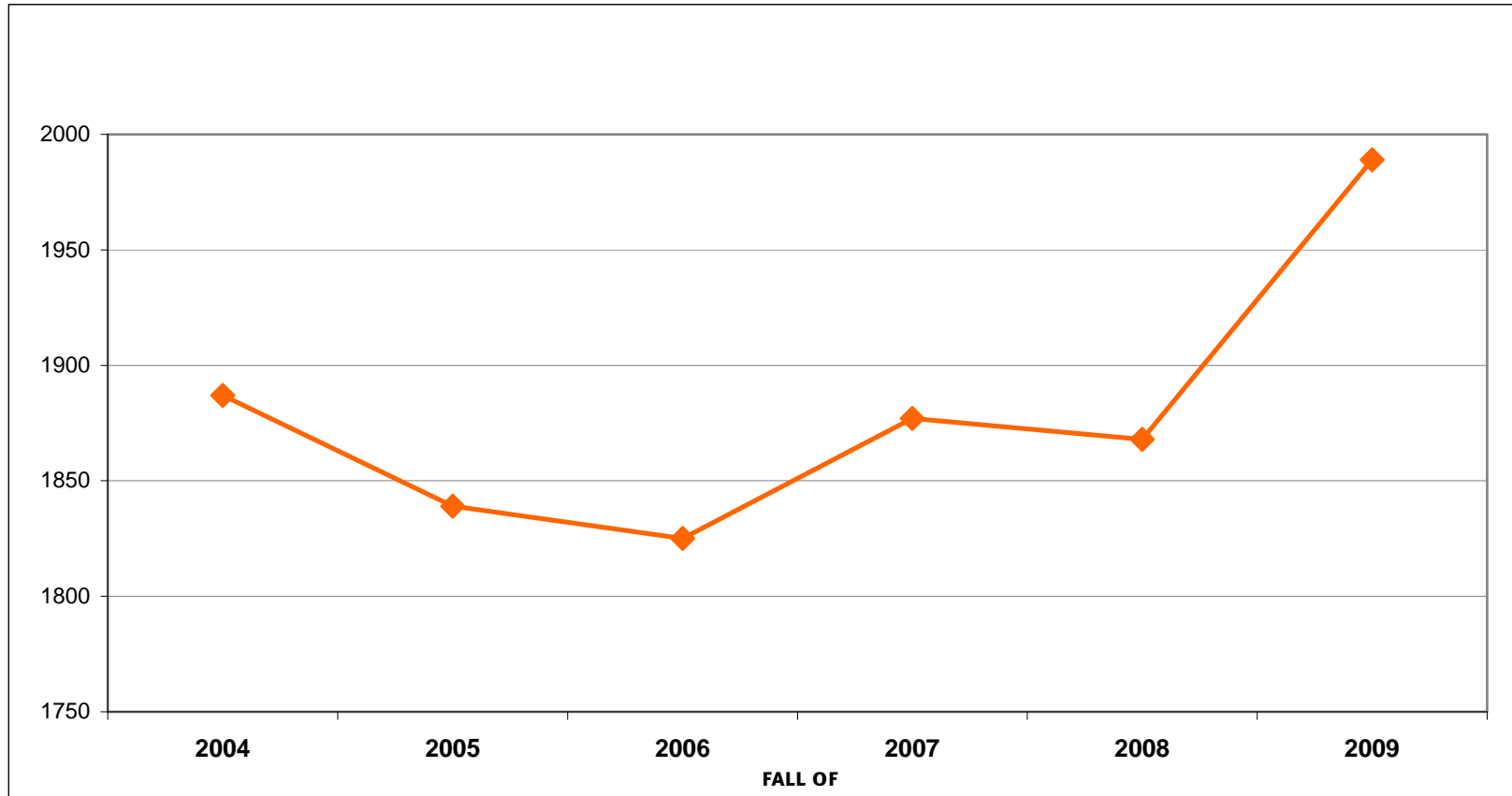
**HEADCOUNT ENROLLMENT
UNDERGRADUATE AND GRADUATE**

Headcount	FALL OF						Percent of Total (2009)	Change From One Year Ago	Change From Five Years Ago
	2004	2005	2006	2007	2008	2009			
Total	1887	1839	1825	1877	1868	1989	100%	6.5%	5.4%
Undergraduate	1866	1819	1804	1863	1846	1972	99%	6.8%	5.7%
Graduate	21	20	21	14	22	17	1%	-22.7%	-19.0%
Women	1102	1040	1022	1060	1044	1127	57%	8%	2.3%
Men	785	799	803	817	824	862	43%	4.6%	9.8%
White	1063	1053	1073	1096	1091	1181	59%	8.2%	11.1%
Asian	219	237	251	262	278	317	16%	14%	44.7%
Hispanic or Latino	276	267	248	288	270	264	13%	-2.2%	-4.3%
Black or African American	135	112	111	114	109	111	6%	1.8%	-17.8%
International	54	55	43	39	41	38	2%	-7.3%	-29.6%
American Indian or Alaska Native	21	16	12	14	18	23	1%	27.8%	9.5%
Unknown	119	99	87	64	61	55	3%	-9.8%	-53.8%
California Resident	926	862	864	841	831	894	45%	7.6%	-3.5%
Out of State	907	922	918	997	996	1057	53%	6.1%	16.5%
International	54	55	43	39	41	38	2%	-7.3%	-29.6%
Full-time	1856	1810	1795	1847	1849	1966	99%	6.3%	5.9%
Part-time	31	29	30	30	19	23	1%	21.1%	-25.8%
Fulltime Equivalent (FTE)	1872.4	1826.3	1809.4	1862.3	1854.6	1976.7		6.6%	5.6%
Degree-Seeking Undergrads Who Are First-Generation College Students	338	303	273	290	293	300	15%	2.4%	-11.2%
Percent Students of Color*	38.0%	37.5%	36.7%	38.2%	38.2%	37.7%		-0.5%	-0.3%

* Percent of total headcount; students who are International or of Unknown ethnicity are excluded from this calculation.

Sources: Banner SZRCENS and SPBPERS tables; Registrar Census reports

HEADCOUNT ENROLLMENT 2004 - 2009



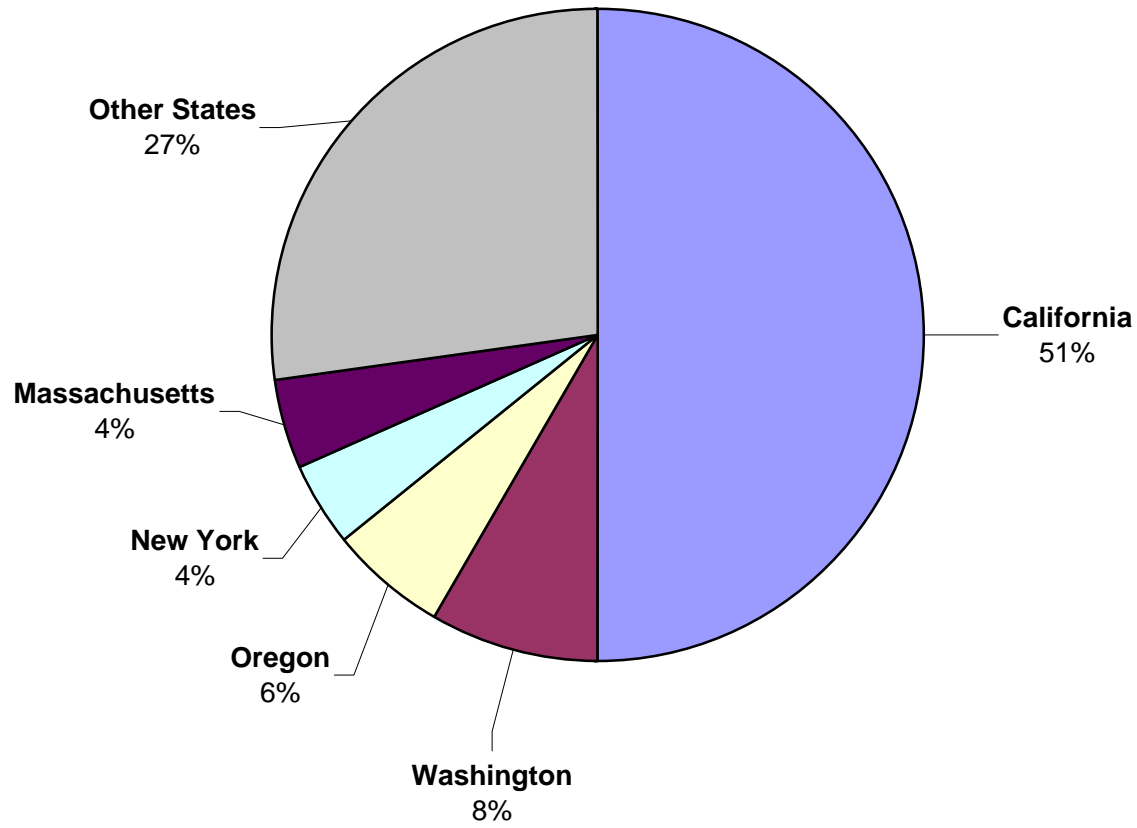
FALL 2009 ENROLLMENT BY STATE AND COUNTRY
UNDERGRADUATE AND GRADUATE

State	Count	State	Count	Country	Count
California	915	New Hampshire	10	England, United Kingdom	8
Washington	153	Idaho	8	Indonesia	3
Oregon	107	Michigan	8	South Korea	3
Massachusetts	77	Tennessee	8	Canada	2
New York	77	Iowa	7	Japan	2
Colorado	62	Rhode Island	7	Mexico	2
Hawaii	59	Georgia	5	People's Republic of China	2
Texas	51	Vermont	5	Afghanistan	1
Arizona	47	Alaska	4	Australia	1
Connecticut	38	Florida	4	Bosnia and Herzegovina	1
Minnesota	31	Kansas	4	Bulgaria	1
Illinois	29	Wisconsin	4	Dominican Republic	1
Non-US High School	28	Louisiana	3	France	1
New Mexico	26	North Carolina	3	Germany	1
Maryland	24	South Carolina	3	Guatemala	1
New Jersey	21	Kentucky	2	Hong Kong	1
Pennsylvania	18	Maine	2	India	1
Missouri	15	Montana	2	Italy	1
Washington, DC	15	Nebraska	2	Jordan	1
Nevada	14	Oklahoma	2	Lithuania	1
Utah	13	Arkansas	1	Singapore	1
Virginia	13	Delaware	1	Spain	1
Ohio	12	Guam	1	Vietnam	1
Indiana	10				
		Total	1951	Total	38
44 states plus the District of Columbia and Guam				23 countries	

International students are counted by country of origin; domestic students are counted by state of high school.

Source: Banner GOBINTL, SORHSCH, and SOBSBG1 tables

TOP HOME STATES FOR FALL 2009 ENROLLED STUDENTS



State	Count
California	915
Washington	153
Oregon	107
New York	77
Massachusetts	77
Other States	500

ATHLETICS AND STUDENT CLUBS

	Academic Year					Change From	
	2005-06	2006-07	2007-08	2008-09	2009-10	Change From One Year Ago	Four Years Ago
Number of Men's Varsity Sports	10	10	10	10	10	0%	0%
Number of Women's Varsity Sports	9	9	9	10	11	10.0%	22.0%
Number of Male Varsity Athletes	202	230	225	224	212	-5.4%	5.0%
Number of Female Varsity Athletes	117	125	149	151	159	5.3%	35.9%
Number of Student Clubs	109	109	112	105	82	-21.90%	-24.70%

Sources: Athletics, Student Life, Institutional Research

UNDERGRADUATES LIVING ON CAMPUS, OFF CAMPUS, AND IN OFF-CAMPUS PROGRAMS
DEGREE- AND NON-DEGREE SEEKING UNDERGRADUATES

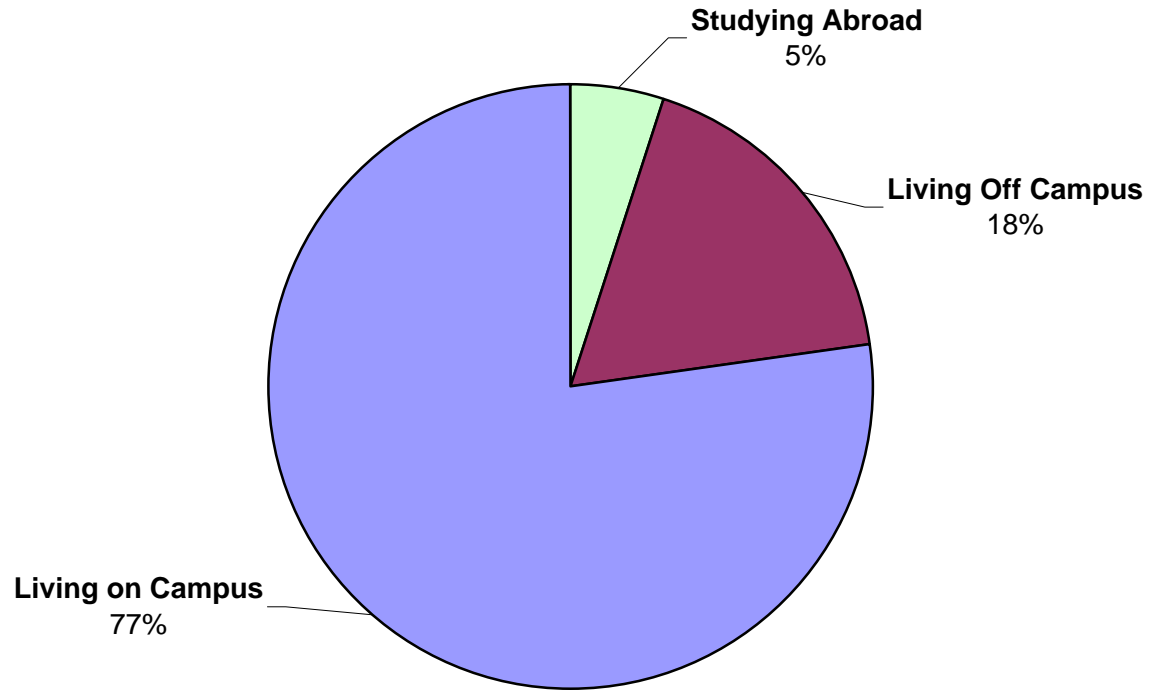
Undergraduate Headcount	FALL OF						Change From One Year Ago	Change From Five Years Ago
	2004	2005	2006	2007	2008	2009		
Total	1866	1819	1804	1863	1846	1972	6.8%	5.7%
Living on Campus	1325	1299	1282	1312	1377	1522	10.5%	14.9%
Studying Abroad or in an Off Campus Program	101	63	87	76	84	99	17.9%	-2.0%
Living Off Campus	440	457	435	475	385	351	-8.8%	-20.2%
Housing Capacity	1338	1305	1314	1313	1450	1565	7.9%	17.0%
Percent Living on Campus	71.0%	71.4%	71.1%	70.4%	74.6%	77.2%	2.6%	6.2%
Percent Studying Abroad or in an Off Campus Program	5.4%	3.5%	4.8%	4.1%	4.6%	5.0%	0.5%	-0.4%
Percent Living Off Campus	23.6%	25.1%	24.1%	25.5%	20.9%	17.8%	-3.1%	-5.8%

"Living On Campus" includes living in college-owned Greek houses and other student housing.

Students entering Fall 2007 and earlier were required to live on-campus their first year; students entering Fall 2008 were required to live on-campus their first two years; Fall 2009 students three years.

Source: Banner SLRRASG table, Residence Life

PERCENT OF FALL 2009 UNDERGRADUATE STUDENTS
LIVING ON CAMPUS



Fall Undergraduate Headcount	2009
Studying Abroad (International or Domestic)	5.0%
Living Off Campus	17.8%
Living on Campus	77.2%

NUMBER OF STUDENTS IN EACH MAJOR
DEGREE-SEEKING UNDERGRADS ONLY; STUDENTS WITH DOUBLE MAJORS ARE COUNTED TWICE

Major	SPRING OF						Percent Change From One Year Ago	Percent Change From Five Years Ago
	2004	2005	2006	2007	2008	2009		
American Studies	19	25	19	21	16	17	6.3%	-10.5%
Anthropology	21	24	25	9	7		-100.0%	-100.0%
Art History/Visual Arts	94	94	85	89	102	79	-22.5%	-16.0%
Asian Studies	12	22	26	29	30	24	-20.0%	100.0%
Biochemistry	32	31	36	47	49	39	-20.4%	21.9%
Biology	71	80	79	79	93	91	-2.2%	28.2%
Chemistry	24	20	20	16	18	17	-5.6%	-29.2%
Cognitive Science	21	22	20	18	15	15	0.0%	-28.6%
Critical Theory/Social Justice				42	57	37	-35.1%	na
Diplomacy and World Affairs	100	131	127	121	116	119	2.6%	19.0%
Economics	52	58	57	95	142	164	15.5%	215.4%
Economics/Business/Management	121	79	82	45	21		-100.0%	-100.0%
Engl/Comp Lit Studies	107	107	112	98	100	90	-10.0%	-15.9%
French	10	10	8	12	9	6	-33.3%	-40.0%
Geology	18	14	17	15	16	13	-18.8%	-27.8%
Geophysics		1					na	na
Group Language	5	8	7	10	13	16	23.1%	220.0%
History	65	71	70	68	70	68	-2.9%	4.6%
Independent Pattern of Study	9	7	5	8	6	2	-66.7%	-77.8%
Kinesiology	50	52	51	38	38	48	26.3%	-4.0%
Mathematics	23	21	22	21	31	32	3.2%	39.1%
Music	20	19	22	21	19	19	0.0%	-5.0%
Philosophy	14	23	28	29	26	16	-38.5%	14.3%
Physics	32	31	28	25	28	22	-21.4%	-31.3%
Political Science		1					na	na
Politics	74	72	66	70	65	66	1.5%	-10.8%
Psychobiology	19	14	17	18	16	14	-12.5%	-26.3%
Psychology	135	110	92	79	85	83	-2.4%	-38.5%

NUMBER OF STUDENTS IN EACH MAJOR
DEGREE-SEEKING UNDERGRADS ONLY; STUDENTS WITH DOUBLE MAJORS ARE COUNTED TWICE

Major	SPRING OF						Percent Change From One Year Ago	Percent Change From Five Years Ago
	2004	2005	2006	2007	2008	2009		
Psychology/Biology		2				1	na	na
Religious Studies	26	24	22	23	26	29	11.5%	11.5%
Sociology	74	76	73	70	70	77	10.0%	4.1%
Spanish	51	41	46	44	43	45	4.7%	-11.8%
Theater	47	61	59	54	53	47	-11.3%	0.0%
Urban/Environmental Policy	46	46	48	47	58	72	24.1%	56.5%
Women's Studies/Gender Studies	11	4	6	5	5	2	-60.0%	-81.8%
Undeclared	482	500	456	483	464	511	10.1%	6.0%
Total	1885	1901	1831	1849	1907	1881	-1.4%	-0.2%

The Critical Theory and Social Justice program began with the 2007 academic year. The Anthropology program was discontinued after 2006; the Economics for Business Management program was discontinued after 2005; the Women's Studies/Gender Studies program was discontinued after 2008.

Source: Banner SGBSTDN table

FIRST-YEAR APPLICANTS FOR ADMISSION

Headcount	FALL OF						Percent of Total (2009)	Change From One Year Ago	Change From Five Years Ago
	2004	2005	2006	2007	2008	2009			
Total	4837	5113	5306	5270	5790	6013	100%	3.9%	24.3%
Women	2785	3006	3074	3044	3341	3435	57%	2.8%	23.3%
Men	2035	2107	2232	2222	2449	2578	43%	5.3%	26.7%
Unknown	17	0	0	4	0	0			
White	1929	2243	2300	2688	2828	2839	47%	0.4%	47.2%
Asian	724	808	803	819	916	1091	18%	19.1%	50.7%
Latino/Hispanic	516	567	601	652	779	909	15%	16.7%	76.2%
Black/Afr Amer	284	269	285	290	343	360	6%	5.0%	26.8%
International	416	366	452	436	482	509	8%	5.6%	22.4%
Amer Indian/Nat Amer	28	40	60	78	86	82	1%	-4.7%	192.9%
Unknown	940	820	805	307	356	223	4%	-37.4%	-76.3%
California Resident	2295	2450	2498	2458	2650	2932	49%	10.6%	27.8%
Out of State	2128	2301	2357	2376	2658	2572	43%	-3.2%	20.9%
International	414	362	451	436	482	509	8%	5.6%	22.9%
Admit Rate (Percent who got admitted)	44.9%	40.8%	42.0%	44.1%	39.3%	42.9%		3.6%	-1.9%

TRANSFER APPLICANTS FOR ADMISSION

Total	298	284	290	296	372	455	22.3%	52.7%
-------	-----	-----	-----	-----	-----	-----	-------	-------

Source: Admission, Institutional Research

ADMITTED STUDENTS – First-Year

Headcount	FALL OF						Percent of Total (2009)	Change From One Year Ago	Change From Five Years Ago
	2004	2005	2006	2007	2008	2009			
Total	2171	2086	2228	2326	2278	2582	100%	13.3%	18.9%
Women	1362	1220	1310	1379	1335	1519	59%	13.8%	11.5%
Men	804	866	918	947	943	1063	41%	12.7%	32.2%
Unknown	5	0	0	0	0	0			
White	932	969	1042	1327	1227	1472	57%	20.0%	57.9%
Asian	318	336	359	390	396	470	18%	18.7%	47.8%
Latino/Hispanic	255	255	258	269	268	301	12%	12.3%	18.0%
Black/Afr Amer	135	129	125	122	143	147	6%	2.8%	8.9%
International	60	44	50	57	57	74	3%	29.8%	23.3%
Amer Indian/Nat Amer	11	16	29	34	42	37	1%	-11.9%	236.4%
Unknown	460	337	365	127	145	81	3%	-44.1%	-82.4%
California Resident	1063	996	1072	1063	1051	1196	46%	13.8%	12.5%
Out of State	1050	1050	1107	1206	1170	1312	51%	12.1%	25.0%
International	58	40	49	57	57	74	3%	29.8%	27.6%
Yield Rate (Percent who matriculated)	22.8%	20.9%	20.6%	19.7%	20.5%	22.3%		1.8%	-0.5%

ADMITTED STUDENTS – Transfers

Total	115	66	125	133	133	102	-23.3%	-11.3%
-------	-----	----	-----	-----	-----	-----	--------	--------

Source: Admission, Institutional Research

MATRICULANTS – First-Year

Headcount	FALL OF						Percent of Total (2009)	Change From One Year Ago	Change From Five Years Ago
	2004	2005	2006	2007	2008	2009			
Total	496	436	458	458	467	576	100%	23.3%	16.1%
Women	306	226	254	258	268	331	57%	23.5%	8.2%
Men	190	210	204	200	199	245	43%	23.1%	28.9%
White	277	254	282	264	271	345	60%	27.3%	24.5%
Asian	51	68	78	75	70	105	18%	50.0%	105.9%
Latino/Hispanic	78	57	52	77	59	70	12%	18.6%	-10.3%
Black/Afr Amer	43	27	25	24	37	33	6%	-10.8%	-23.3%
International	6	13	7	7	10	8	1%	-20.0%	33.3%
Amer Indian/Nat Amer	4	1	5	5	4	8	1%	100.0%	100.0%
Unknown	37	16	9	6	16	7	1%	-56.3%	-81.1%
California Resident	224	170	215	175	202	255	44%	26.2%	13.8%
Out of State	266	253	236	276	255	313	54%	22.7%	17.7%
International	6	13	7	7	10	8	1%	-20.0%	33.3%
Median SATV (Critical Reading)	640	640	640	650	640	650		1.6%	1.6%
Median SATM (Math)	630	650	650	650	640	650		1.6%	3.2%
Median SATW (Writing)	na	na	640	640	650	660		1.5%	na
Median Combined SAT	na	na	1920	1930	1930	1960		1.6%	na
Mean High School GPA	3.54	3.59	3.58	3.57	3.58	3.59		0.4%	1.4%
Percent in Top 10% of HS Class*	51.9%	58.8%	60.7%	57.4%	64.6%	59.0%		-5.6%	7.1%

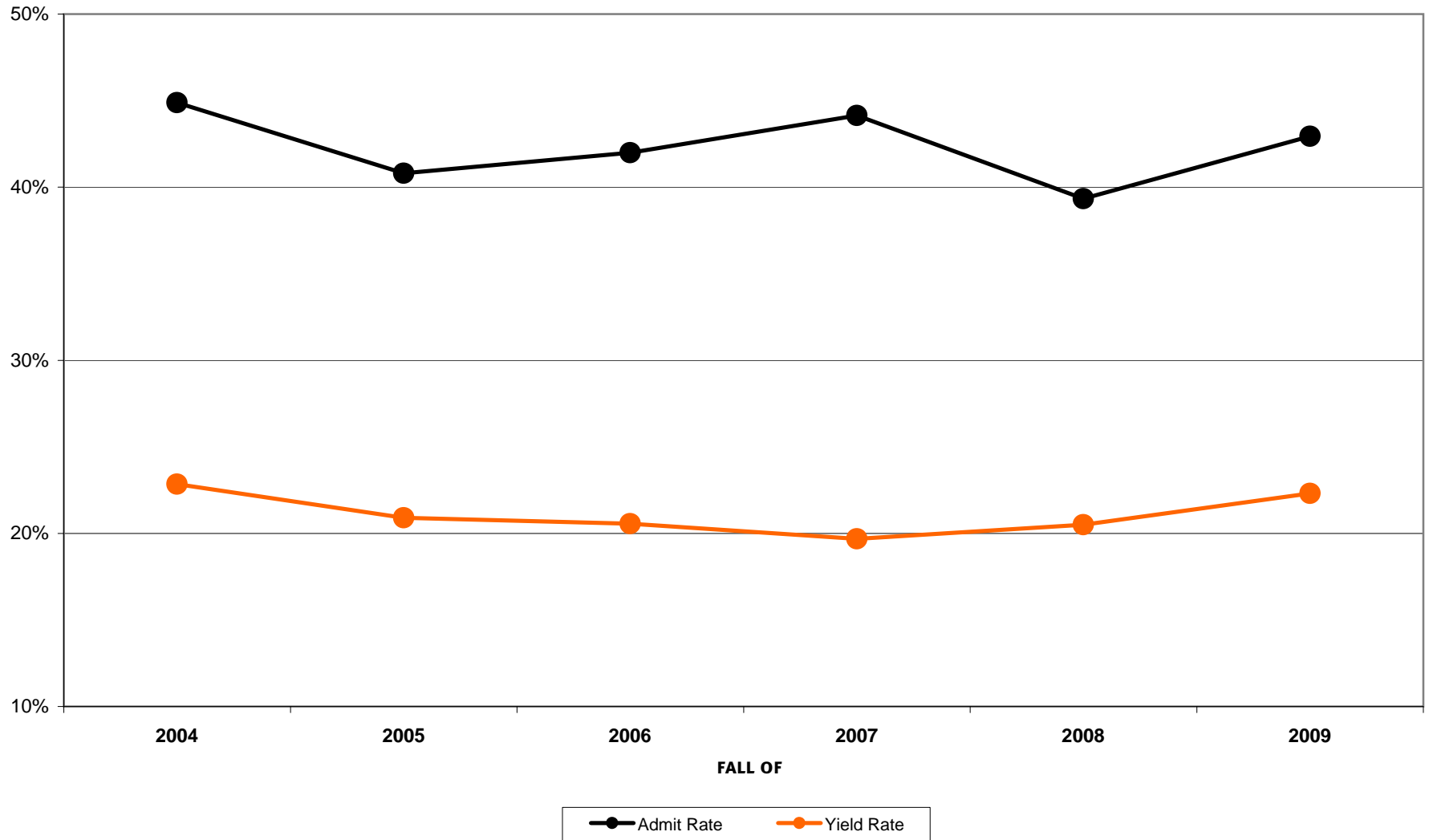
*Only 40%-60% of students have class rank information

MATRICULANTS – Transfers

Total	50	35	60	61	52	41	-21.2%	-18.0%
-------	----	----	----	----	----	----	--------	--------

Source: Admission, Institutional Research

**ADMIT RATE & YIELD RATE
FIRST-YEAR APPLICANTS**



RETENTION AND GRADUATION RATES

First-Year Students Who Entered Fall of	1998	1999	2000	2001	2002	2003	2004	2005	2006	2007	2008
Entering Cohort Size	377	411	498	458	447	441	496	436	458	458	467
Exclusions	0	1	3	1	0	0	0	0	0	0	0
Net Cohort Size	377	410	495	457	447	441	496	436	458	458	467
Retention											
Percent Returning for ...											
... Fall of 2nd Year	87.0%	90.3%	92.4%	91.3%	91.1%	91.6%	91.7%	90.1%	91.5%	94.1%	90.8%
... Fall of 3rd Year	78.8%	84.9%	84.1%	85.4%	87.0%	86.2%	85.3%	85.1%	85.4%	89.1%	
... Fall of 4th Year	73.7%	83.7%	81.7%	82.3%	85.5%	83.7%	84.5%	81.7%	83.8%		
Graduation											
Percent Graduating ...											
... within 4 Years or Less	68.7%	78.3%	75.4%	75.7%	82.3%	77.8%	79.6%	80.7%			
... within 5 Years or Less	73.2%	81.2%	80.4%	80.3%	85.5%	83.9%	84.3%				
... within 6 Years or Less	75.1%	83.9%	81.6%	81.0%	86.1%	84.8%					

DEGREES AWARDED

Degree	ACADEMIC YEAR						Change From One Year Ago	Change From Five Years Ago
	2003-04	2004-05	2005-06	2006-07	2007-08	2008-09		
Bachelors (AB)	459	438	467	410	474	440	-7.2%	-4.1%
Master of Arts in Teaching (M)	16	1	13	7	7	4	-42.9%	-75.0%
Master of Arts (MA)				2		2	na	na

Exclusions: Students are omitted from the cohort if they failed to graduate due to death, entering military service, entering the foreign service, or serving on a religious mission.

**FINANCIAL AID
DEGREE-SEEKING UNDERGRADUATES ONLY**

	FALL OF					Change From One Year Ago	Change From Four Years Ago
	2005	2006	2007	2008	2009*		
Percent receiving Financial Aid	76.5%	76.3%	78.2%	79.2%	76.3%	-2.9%	-0.2%
Percent receiving a Pell Grant	18.5%	17.0%	19.3%	19.2%	20.3%	1.1%	1.8%
Percent receiving an Institutional Grant	67.2%	68.7%	71.5%	72.9%	70.8%	-2.1%	3.6%
Average Institutional Grant	\$15,915	\$16,114	\$17,077	\$17,946	\$19,835	10.5%	24.6%

*Preliminary

Source: Financial Aid datamart DM_STUAWDX

ALUMNI ENTERING MEDICAL SCHOOL, OSTEOPATHIC SCHOOL, LAW SCHOOL, AND EARNING

NUMBER OF GRADUATING SENIORS AND ALUMNI ENTERING MEDICAL OR OSTEOPATHIC SCHOOL										
Fall of	2000	2001	2002	2003	2004	2005	2006	2007	2008	2009
Number Entering Med/Osteo School	na	na	na	na	12	12	14	17	15	19
Percent of Graduates	na	na	na	na	3.1%	3.0%	3.3%	4.1%	3.9%	4.3%

Note that students entering medical or osteopathic school may have graduated from Oxy earlier than the year stated, rather than entering straight from Oxy.

NUMBER OF GRADUATING SENIORS AND ALUMNI ENTERING LAW SCHOOL										
Fall of	2000	2001	2002	2003	2004	2005	2006	2007	2008	2009
Number Entering Law School	na	na	na	na	na	36	39	34	34	na
Percent of Graduates	na	na	na	na	na	9.0%	9.2%	8.1%	7.8%	na

Note that students entering law school may have graduated from Oxy earlier than the year stated, rather than entering straight from Oxy.

DOCTORATES AWARDED TO ALUMNI										
Academic Year	2000-01	2001-02	2002-03	2003-04	2004-05	2005-06	2006-07	2007-08	2008-09	2009-10
Number of Doctorates Earned	24	29	31	38	28	34	na	na	na	na
Percent of Graduates	6.4%	7.6%	8.1%	10.0%	7.3%	9.0%	na	na	na	na

Note that students receiving doctorates in a given year may have graduated from Oxy any number of years prior to the year stated.

Sources: Director of Pre-Health Advising and American Medical College Application Service (AMCAS) reports; Pre-Law advisor and Law School Admission Council (LSAC) reports; and HEDS Baccalaureate Origins Report

FACULTY

	ACADEMIC YEAR						Change From One Year Ago	Change From Five Years Ago
	2004-05	2005-06	2006-07	2007-08	2008-09	2009-10		
Total	204	222	220	225	253	257	1.6%	26.0%
Full-Time	145	148	150	157	163	169	3.7%	16.6%
Part-Time	59	74	70	68	90	88	-2.2%	49.2%
Percent Full-Time	71.1%	66.7%	68.2%	69.8%	64.4%	65.8%	1.3%	-5.3%
Percent Part-Time	28.9%	33.3%	31.8%	30.2%	35.6%	34.2%	-1.3%	5.3%
Full-Time Only:								
Tenured and Tenure Track	111	120	130	131	134	139	3.7%	25.2%
Tenured	94	95	95	93	95	95	0.0%	1.1%
Untenured	17	25	35	38	39	44	12.8%	158.8%
Not on Tenure Track	34	28	20	26	29	30	3.4%	-11.8%
With PhD	130	134	132	140	146	146	0.0%	12.3%
With Terminal Degree	140	139	138	146	153	155	1.3%	10.7%
% Tenured & Tenure Track	76.6%	81.1%	86.7%	83.4%	82.2%	82.2%	0.0%	5.7%
% Tenured	64.8%	64.2%	63.3%	59.2%	58.3%	56.2%	-2.1%	-8.6%
% with PhD	89.7%	90.5%	88.0%	89.2%	89.6%	86.4%	-3.2%	-3.3%
% with Terminal Degree	96.6%	93.9%	92.0%	93.0%	93.9%	91.7%	-2.1%	-4.8%
Full-Time Tenured or Tenure Track Only:								
Full	66	66	73	71	74	74	0.0%	12.1%
Associate	31	30	23	22	22	21	-4.5%	-32.3%
Assistant	13	24	34	38	39	44	12.8%	238.5%
Instructor	1	0	0	0	0	0	0.0%	-100.0%

Source: Dean of Faculty, Human Resources, and Institutional Research

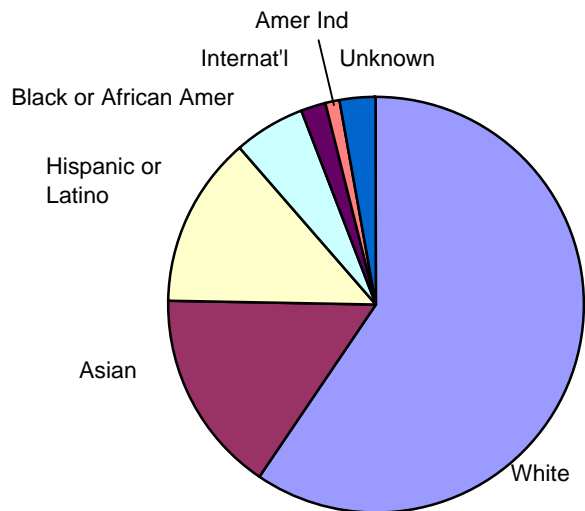
FACULTY DEMOGRAPHICS

	ACADEMIC YEAR						Percent of Total (2009-10)	Change From One Year Ago	Change From Five Years Ago
	2004-05	2005-06	2006-07	2007-08	2008-09	2009-10 (prelim)			
Full-time									
Total	145	148	150	157	163	169	100%	3.7%	16.6%
Women	64	66	68	72	76	81		6.6%	26.6%
Men	81	82	82	85	87	88		1.1%	8.6%
Percent Women	44%	45%	45%	46%	47%	48%			
White	103	104	101	105	111	114	67%	2.7%	10.7%
Asian	18	18	19	21	22	20	12%	-9.1%	11.1%
Hispanic or Latino	15	16	20	19	18	19	11%	5.6%	26.7%
Black or African American	9	10	10	11	11	11	7%	0.0%	22.2%
Unknown	0	0	0	1	1	5	3%	400.0%	na
Percent Minority*	29.0%	29.7%	32.7%	32.7%	31.5%	30.5%		-1.0%	1.5%
Part-time									
Total	59	74	70	68	90	88	100%	-2.2%	49.2%
Women	29	38	39	27	36	36		0.0%	24.1%
Men	30	36	31	41	54	52		-3.7%	73.3%
Percent Women	49%	51%	56%	40%	40%	41%			
White	39	48	49	46	57	56	64%	-1.8%	43.6%
Asian	5	8	6	6	6	5	6%	-16.7%	0.0%
Hispanic or Latino	8	10	6	8	11	9	10%	-18.2%	12.5%
Black or African American	1	3	3	3	7	4	5%	-42.9%	300.0%
Unknown	6	5	6	5	9	14	16%	55.6%	133.3%
Percent Minority*	26.4%	30.4%	23.4%	27.0%	29.6%	24.3%		-5.3%	-2.1%

*Faculty of Unknown ethnicity are excluded from the calculation of percent minority.

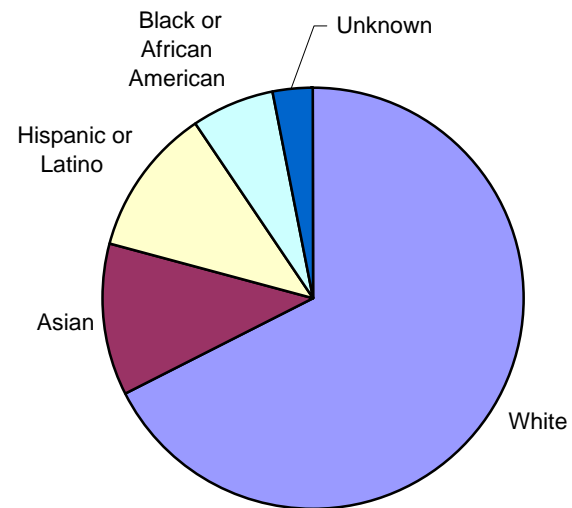
Source: Dean of Faculty, Human Resources, and Institutional Research

ETHNICITY OF STUDENTS, FALL 2009



Ethnicity of Students, Fall 2009	
White	59%
Asian	16%
Hispanic or Latino	13%
Black or African American	6%
International	2%
American Indian or Alaska Native	1%
Unknown	3%

ETHNICITY OF FULL-TIME FACULTY, 2009-10



Ethnicity of Full-Time Faculty, 2009-10	
White	67%
Asian	12%
Hispanic or Latino	11%
Black or African American	7%
Unknown	3%

STUDENT-FACULTY RATIO AND CLASS SIZE

	FALL OF						Change From One Year Ago	Change From Five Years Ago
	2004	2005	2006	2007	2008	2009		
Student-Faculty Ratio	10.5	10.1	9.8	9.8	9.1	9.4	3.3%	-10.5%
Average Class Size	20.6	20.3	19.8	20.4	18.3	19.4	6.4%	-5.4%
Percent of Classes with:								
2-9 students	15.0%	12.6%	14.9%	12.5%	16.9%	14.1%	-2.8%	-0.9%
10-19 students	39.4%	47.6%	41.5%	41.6%	45.6%	44.2%	-1.3%	4.8%
20-29 students	24.8%	21.5%	27.5%	27.8%	24.6%	25.1%	0.4%	0.3%
30-39 students	16.9%	13.9%	12.3%	15.6%	10.6%	15.2%	4.6%	-1.7%
40-49 students	2.0%	3.2%	3.5%	2.2%	2.0%	0.6%	-1.4%	-1.4%
50-99 students	2.0%	1.3%	0.3%	0.3%	0.3%	0.8%	0.6%	-1.1%

Sources: Institutional Research, Dean of Faculty, Registrar, Banner SSBSECT table

STAFF

	FALL OF						Change From One Year Ago	Change From Five Years Ago
	2004	2005	2006	2007	2008	2009		
Full-time	363	363	379	385	387	410	5.9%	12.9%
Part-time	22	22	19	27	30	23	-23.3%	4.5%
Full-time Only:								
Exec/Admin/Managerial	37	36	43	44	47	52	10.6%	40.5%
Other Professionals	105	111	120	123	122	137	12.3%	30.5%
Technical and Paraprofessionals	12	12	18	17	18	18	0.0%	50.0%
Clerical and Secretarial	85	82	72	73	69	69	0.0%	-18.8%
Skilled Crafts	7	5	5	6	6	7	16.7%	0.0%
Service/Maintenance	117	117	121	122	125	127	1.6%	8.5%

These figures exclude faculty.

Source: Human Resources Banner report

TUITION, FEES, ROOM AND BOARD

	ACADEMIC YEAR					
	2004-05	2005-06	2006-07	2007-08	2008-09	2009-10
Tuition	29,120	30,724	32,800	34,440	36,160	37,970
Fees	590	791	889	903	911	965
Room and Board	8,650	9,118	9,552	10,030	10,820	11,360
Total	38,360	40,633	43,241	45,373	47,891	50,295

Change From One Year Ago	Change From Five Years Ago
5.0%	30.4%
5.9%	63.6%
5.0%	31.3%
5.0%	31.1%

Source: College Catalog, Financial Aid Office

ENDOWMENT, OPERATING BUDGET, and TUITION DISCOUNT RATE

	FISCAL YEAR							Change From One Year Ago	Change From Five Years Ago
	2003-04	2004-05	2005-06	2006-07	2007-08	2008-09	2009-10		
Endowment at End of Fiscal Year (\$000,000)	258.0	279.8	315.6	378.0	360.0	273.8		-23.9%	6.1%
Operating Budget (\$000,000)									
Gross		80.4	84.7	89.1	94.1	103.6	109.3	5.5%	35.9%
Net of Financial Aid		60.2	64.1	68.5	72.0	79.3	82.0	3.4%	36.0%
Tuition Discount Rate		36.6%	36.3%	34.9%	36.5%	37.5%	39.0%	1.5%	6.5%

FACILITIES AND PHYSICAL PLANT

	2009-10
Total Square Footage	1,832,082
Academic, Administrative, Athletic, and Miscellaneous Auxiliary Buildings	746,439
Residence Halls and College-Owned Rental Properties (including Greek houses)	468,977
Grounds/Structures	616,666

LIBRARY

	FISCAL YEAR							Change From One Year Ago	Change From Five Years Ago
	2003-04	2004-05	2005-06	2006-07	2007-08	2008-09	2009-10		
Library Holdings									
Bound Volumes	486,241	482,386	484,627	443,780	447,359	450,828		0.8%	-7.3%
Serial Titles	13,288	15,849	13,384	43,584	28,564	28,612		0.2%	115.3%
Microforms		416,081	417,186	420,169	423,608	426,016		0.6%	

Sources: Business Office, Facilities Management, Library

TRUSTEES AND OFFICERS, 2009-10

TRUSTEES			
Chair	John R. Farmer P'98		
Vice Chairs	Christopher C. Calkins '67	Fred Hameetman '61	Catherine A. Pepe '64
Members of the Board	David W. Berkus '62 P'95 Carl A. Botterud '79 John G. Branca '72 Eileen Anisgarten Brown '73 Anne Cannon Enders '74 Virginia Goss Cushman '55 Alice Walker Duff '69 Gloria Duffy '75 Ronald P. Estrada '79 Irwin S. Field Gary Steven Findley '76 Allen B. Gresham '53	J. Eugene Grigsby III '66 Stephen F. Hinchliffe, Jr. '55 Julie Dees Johnson '61 William M. Kahane '70 John Keister '89 Charlene Conrad Liebau Susan Mallory '76 M'78 Daniel Ian McKinnon '89 Robert Neithart '87 John B. Power '58 Joan A. Payden	Valerie Reece '73 David H. Roberts '67 Steven R. Robinson '77 Stephen D. Rountree '71 Catherine Young Selleck '55 Robert A. Skotheim Kenneth D. Sulzer '82 Bernard J. Tyson Andrea Van de Kamp Christopher Varelas '85 S. Todd White '59
Ex Officio	Jonathan Veitch, President, Occidental College Robert Cunningham '71, President, Alumni Board of Governors		

OFFICERS	Jonathan Veitch, President
	Eric Frank, Vice President for Academic Affairs and Dean of the College
	Dennis Collins, Senior Vice President for Institutional Advancement
	Barbara Avery, Vice President for Student Affairs and Dean of Students
	Sandra Cooper, Vice President for Legal Affairs and General Counsel
	Vince Cuseo, Vice President for Admission and Financial Aid
	Michael P. Groener, Vice President for Administration and Finance
	Pamela McQuesten, Vice President for Information Resources and Chief Information Officer